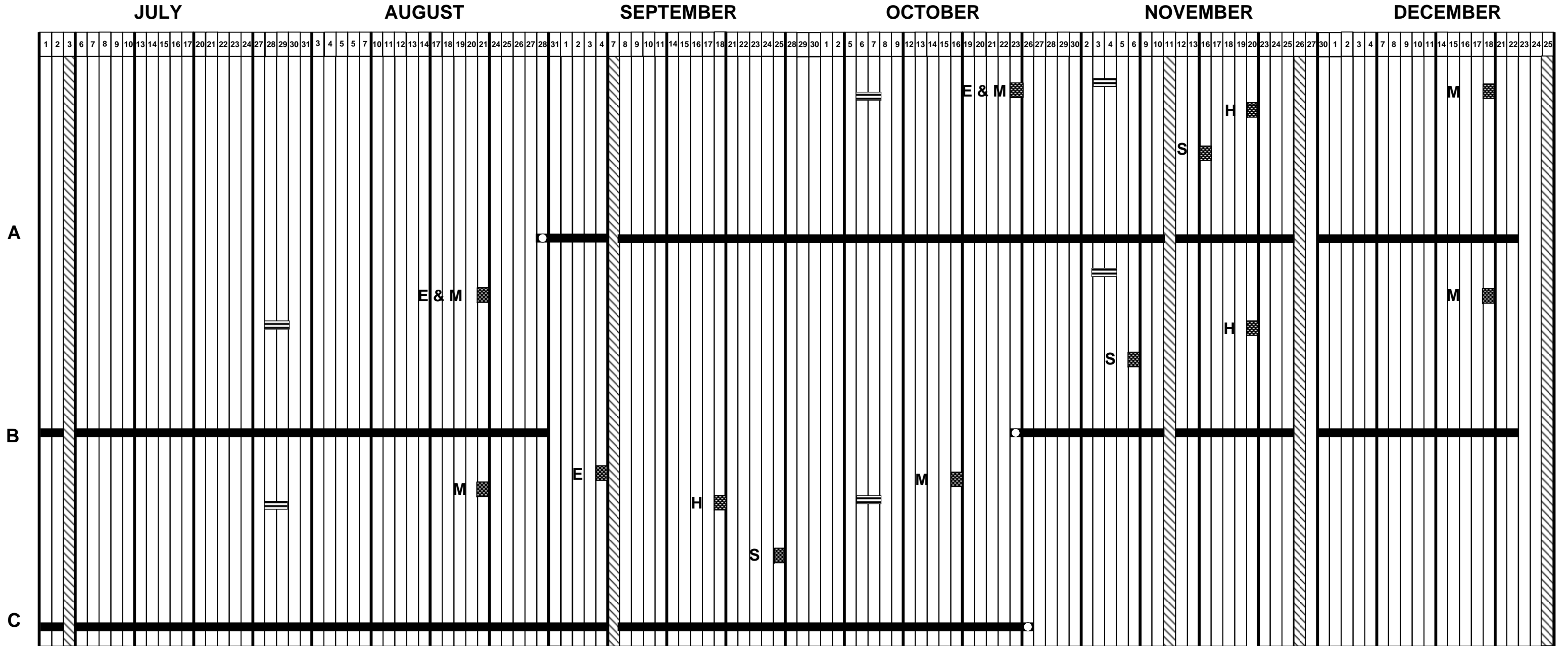


# 2009-10 Schedule of Periodic Assessments Three Track High Schools, Grades 9-12



Assessments should be administered no later than the End Date identified below  
Answer sheets will arrive in schools 3 to 4 weeks before the End Dates identified below



Instructional Days  
 CAHSEE 10 Make-up  
 CST/CMA/CAPA  
 CAHSEE 10 Census  
 CAHSEE Retest

= End Date for Assessment  
 M = Mathematics  
 E = English/Language Arts  
 S = Science  
 H = History/Social Science



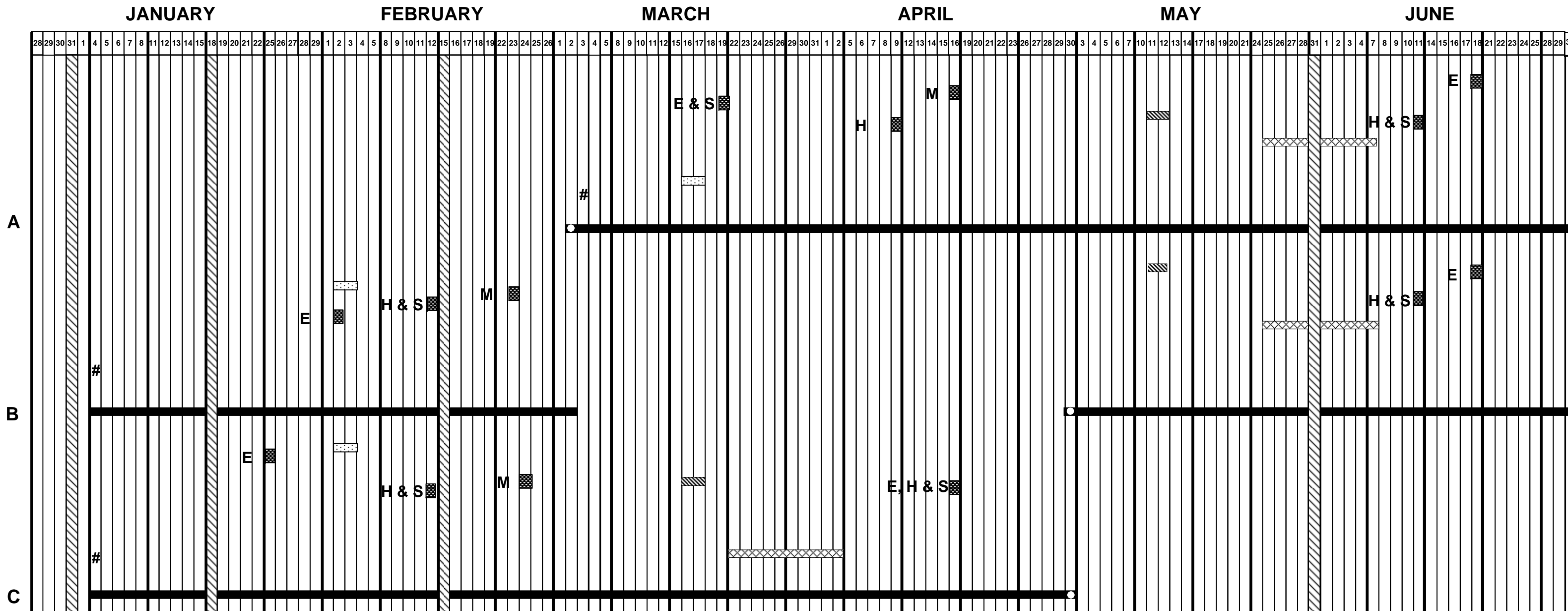
HOLIDAY



## 2009-10 Schedule of Periodic Assessments Three Track High Schools, Grades 9-12

ATTACHMENT B

Assessment should be administered no later than the End Date identified below  
Answer sheets will arrive in schools 3 to 4 weeks before the End Dates identified below



Instructional Days   
  CAHSEE 10 Make-up   
  CAHSEE 10 Census  
 CST/CMA/CAPA   
 # = Second Semester Begins   
 CAHSEE Retest

= End Date for Assessment    M = Mathematics  
 E = English/Language Arts    S = Science  
 H = History/Social Science